

RTO 25.31 Single Obstacle Light. RTO 25.32 Twin Obstacle Light.

Application.

The obstacle lights RTO 25.31/32 are designed for marking of obstacles at night to provide aviation safety. Detailed tender specifications are available on CD-ROM.

Complies with Regulations.

- ICAO Annex 14, Volume I, 3. Edition, July 1999, Type A
- BMV-Regulations (Ministry of Transport, Building and Housing), December 1999
- Approved by the German Ministry of Transport
- CE-Certificate

Features.

- Modular construction
- Designed for ease of maintenance
- Average life of signal lamp approx. 8,000 h
- Average life of halogen lamp with electronic ballast approx. 40,000 h
- Solid, durable housing made of glass fibre reinforced plastic in RAL 1006, aviation yellow
- Lamp holder made of seawater-resistant aluminium
- Housing for electronic ballast, current relay and clamps made of plastic

Installation.

The single/twin obstacle light fitting is either fixed to the wall mounting (included) or, alternatively, to a 2" tube (see fig. 2). The special screw cap design means that the lamp can be replaced using only one hand. When replacing lamps, the lamp holder can be hooked into the wall mounting.

A change-over relay, which switches on the reserve lamp in case of main lamp failure, is accommodated within the connecting box. The power supply cable is passed into the connecting box through a cable gland. An alarm contact is available for signaling a lamp failure.



Fig.1 Twin obstacle light



Fig. 2 Single obstacle light

Light distribution.

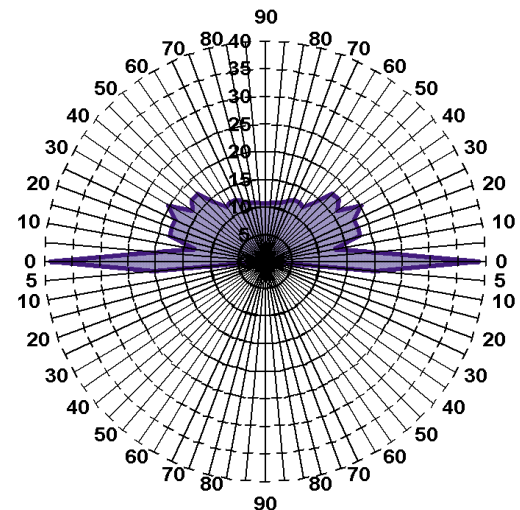


Fig. 3 Light intensity distribution RTO 25.31, vertical (rotationally symmetrical) signal lamp 100W/230 V

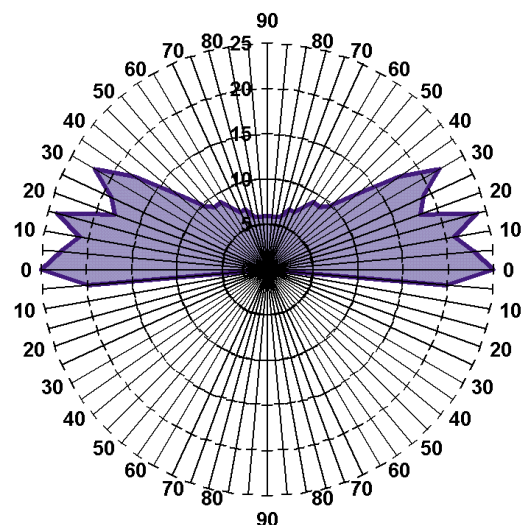


Fig. 4 Light intensity distribution RTO 25.32, vertical (rotationally symmetrical), halogen lamp 150W/230 V with electronic ballast

Ordering Information.

- Single obstacle light 100 W
- Single obstacle light 150 W
- Twin obstacle light 100 W
- Twin obstacle light 150 W

Obstacle Light - RTO 25.3	1	1.1	2	2.1
.....
.....
.....
.....

Technical Data.

Light fixture :

RTO 25.31 Single Obstacle Light

- Glass fibre reinforced plastic colored-through in aviation yellow RAL 1006, protection class IP 54

Optics:

- Omnidirectional red prismatic dome resistant to thermal shocks

Lamps:

- Signal lamp 100W/230 V, average life approx. 8,000 h
- halogen lamp 150W/230 V (operated by electronic ballast) average life approx. 40,000 h

Lamp socket:

- E 27

Electrical supply:

- UV-resistant 3-pole cable (electronic ballast has to be installed externally)

RTO 25.31 Twin Obstacle Light

- Glass fibre reinforced plastic colored-through in aviation yellow RAL 1006, protection class IP 54

- Omnidirectional red prismatic dome resistant to thermal shocks

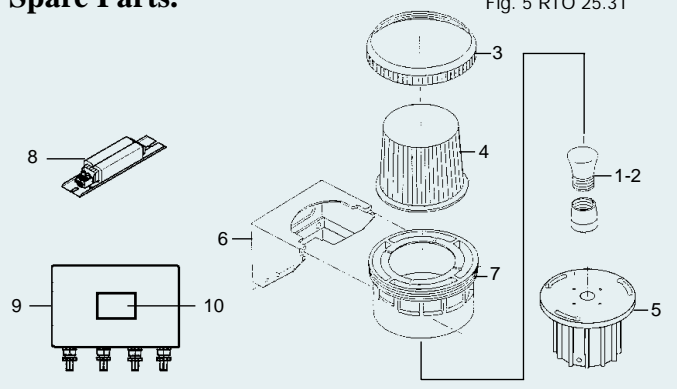
- 2 x signal lamps 100W/230 V average life approx. 8,000 h

- 2 x halogen lamps 150W/230V (operated by electronic ballast) average life approx. 40,000 h

- E 27

- junction box inclusive current relay with/without electronic ballast

Spare Parts.



Consumables

1. Signal lamp 100 W/230V
2. Halogen lamp 150 W/230V

Order numbers

- 272364797
272403460

Spare Parts

3. Retaining ring 272359534
4. Refractor 272367594
5. Lamp holder, complete 280868740
6. Wall mounting, complete 272381716
7. RTO flange, complete 272389844
8. Electronic ballast 272403831
9. Junction box 100 W 272407211
Junction box 150 W 272406222
10. Current relay 272403387

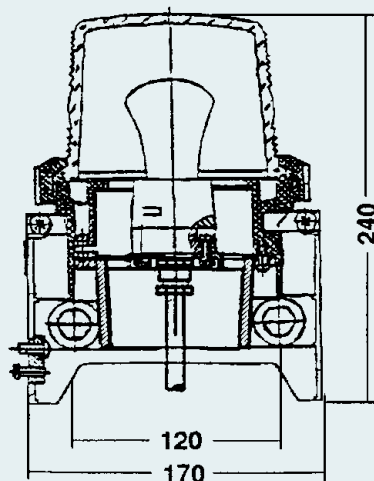
Examples for Installation.

Fig. 6
Single obstacle light
RTO 25.31

Packing information.

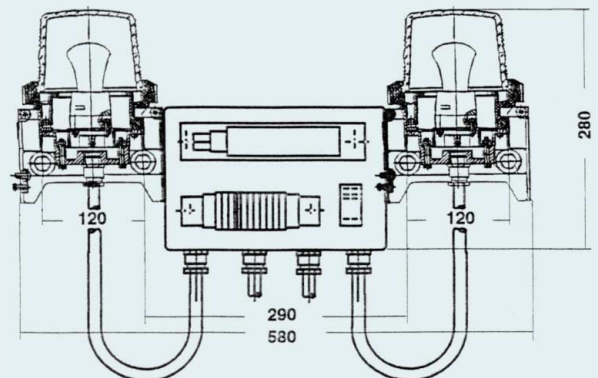
(single obstacle light)
H 240 mm
W 170 mm
D 180 mm

Weight: 2.0 kg
incl. packaging



Dimensions.

Fig. 7 Twin obstacle light RTO 25.32



Packing information. (twin obstacle light)

H 300 · W 580 · D 180 mm · Weight : 6.0 kg incl. packaging

Honeywell

Honeywell Airport Systems GmbH

Industriestraße 23-33 · 22880 Wedel

Phone + 49 (0) 41 03-8004-0

Fax + 49 (0) 41 03-8004-599

Printed on paper bleached without chlorine. The technical data provided is for information purposes only and may vary according to the individual application concerned.

ASG 02.2001 PB RTO2531/32E - Printed in Germany

www.airportsystems.honeywell.com
www.honeywell.de