

OTL 80.21
Single Obstacle Light.
OTL 80.22
Twin Obstacle Light.

Application.

These omnidirectional fixed obstacles lights are used for the night-time marking of obstacles which could endanger air traffic. The twin obstacle light OTL 80.22 is mainly used on objects which are not easily accessible. Detailed tender specification are available on CD-ROM.

Complies with Regulations.

- ICAO Annex 14, Volume I, 3. Edition, July 1999, Type A
- BMV-Regulations (Ministry of Transport, Building and Housing), December 1999
- Approved by the German Ministry of Transport
- CE-Certificate

Features.

- Modular construction
- Designed for ease of maintenance
- Average life of signal lamp approx. 8,000 h
- Seawater-proof light alloy casting

Installation.

The replaceable glass domes in form of drum lenses are mounted on a cast aluminium base and held by a hinged ring rendering them dustproof and watertight.

The single obstacle light OTL 80.21 is supplied as a single light fitting that can be mounted either on a 3/4" tubular support or on a flat iron bracket.

Depending on the type of installation, the cable is fed either through the 3/4" tube or, along the flat iron bracket, through the cable gland in the lower part of the light.

The twin obstruction light OTL 80.22 is mounted side by side on tubular brackets attached to a connecting box. The light fitting is then screwed to the obstacle through four clearance holes in the base of the connecting box.

A change-over relay, which switches on the reserve lamp in case of main lamp failure, is accommodated within the cast iron connecting box. The power supply cable is passed into the connecting box through a cable gland. An alarm contact is available for signaling a lamp failure.



Fig.1 Twin Obstacle Light OTL 80.22



Fig. 2 Single Obstacle Light OTL 80.21

Light distribution.

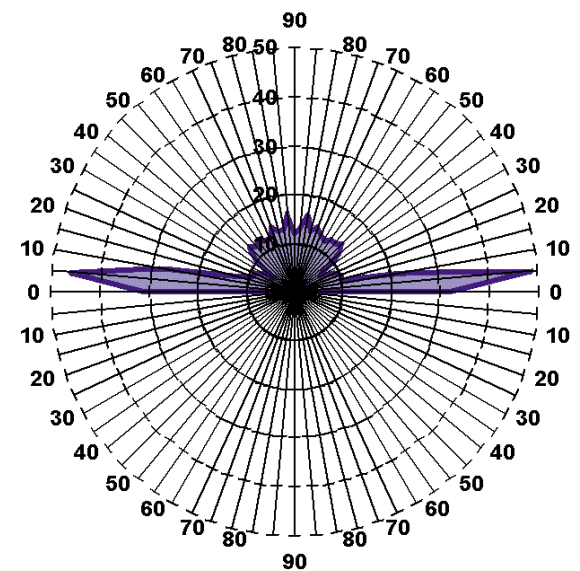


Fig. 3 Light intensity distribution OTL 80.21, vertical (rotationally symmetrical) signal lamp 100 W/230 V.

Ordering Information.

Obstacle Light - OTL 80.2

1 2

- Single obstacle light 100 W
- Twin obstacle light 100 W

Technical Data.

OTL 80.21 Single Obstacle Light

OTL 80.22 Twin Obstacle Light

Housing:

- Seawater resistant cast aluminium alloy RAL 1006, colored-through in aviation yellow, protection class IP 54

- Seawater-resistant cast aluminium alloy RAL 1006, colored-through in aviation yellow, protection class IP 54

Optics:

- Glass dome with Fresnel lens

- Glass dome with Fresnel lens

Light distribution:

- Vertical, with drum lens, aviation red, and 100 W, 230 V incandescent lamps

- Vertical, with drum lens, aviation red, and 100 W, 230 V incandescent lamps

Covering glasses:

- Temperature resistant, colored, aviation red

- Temperature resistant, colored, aviation red

Lamps:

- 1 x incandescent lamp 100 W, 230 V average life time 8,000 h

- 2 x incandescent lamp 100 W, 230 V average life time 8,000 h

Lamp socket:

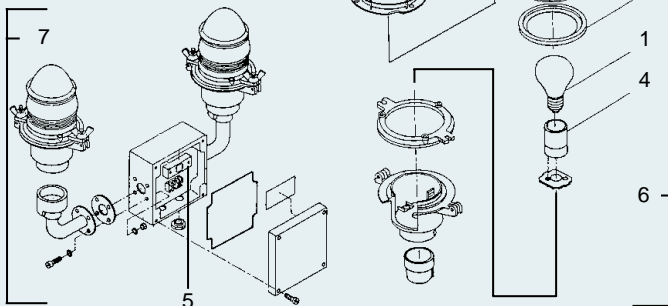
- E 27

- E 27

Spare Parts.

Fig. 4 Single Obstacle Light OTL 80.21

Fig. 5 Twin Obstacle Light OTL 80.22



Consumable

1. Incandescent lamp 100 W

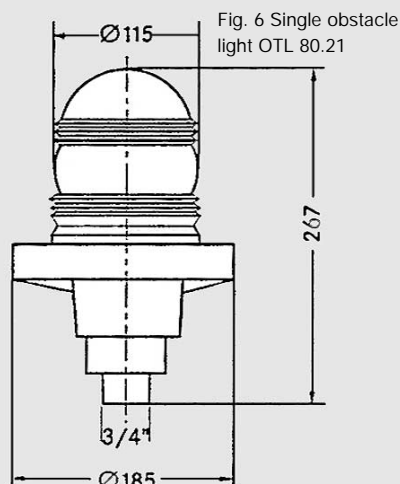
Order numbers

272364797

Spare parts

- | | |
|------------------------------------|-----------|
| 2. Glass dome, red, 126 mm | 280870652 |
| 3. Seal | 280870650 |
| 4. Lamp socket E 27 | 272364779 |
| 5. Current relay | 272403387 |
| 6. Single obstacle light OTL 80.21 | 280868258 |
| 7. Twin obstacle light OTL 80.22 | 280868262 |

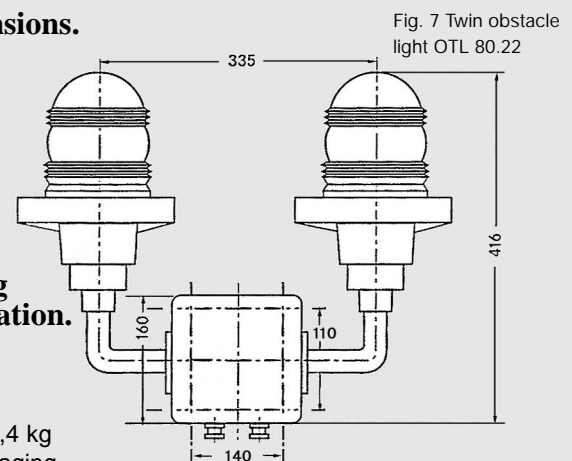
Dimensions.



Packing Information.

H 40 cm
W 40 cm
D 30 cm
Weight: 2,2 kg
inkl. packaging

Dimensions.



Packing Information.

H 60 cm
W 60 cm
D 30 cm
Weight: 6,4 kg
inkl. packaging

Honeywell

Honeywell Airport Systems GmbH

Industriestraße 23-33 · 22880 Wedel

Phone + 49 (0) 41 03-8004-0

Fax + 49 (0) 41 03-8004-599

Printed on paper bleached without chlorine. The technical data provided is for information purposes only and may vary according to the individual application concerned.

ASG 02.2001 PB OTL8021/22E - Printed in Germany

www.airportsystems.honeywell.com
www.honeywell.de